

# DEF REPAIR KIT REPLACEMENT INSTRUCTIONS

## COMPLETE REPLACEMENT INSTRUCTIONS FOR THE DEF TANK REPAIR KIT BY XeMODeX



### BEFORE YOU BEGIN

LISTED BELOW ARE THE TOOLS REQUIRED FOR REMOVING THE RESERVOIR FROM THE SCR CONTAINER

1. XeMODeX tool (included)
2. Flat head screwdriver (not included)
3. 4mm Hex key (included)



# DEF REPAIR KIT REPLACEMENT INSTRUCTIONS

1

## STEP ONE

Remove the three 4mm Hex screws from the urea pump (see Fig. 1 - 3).

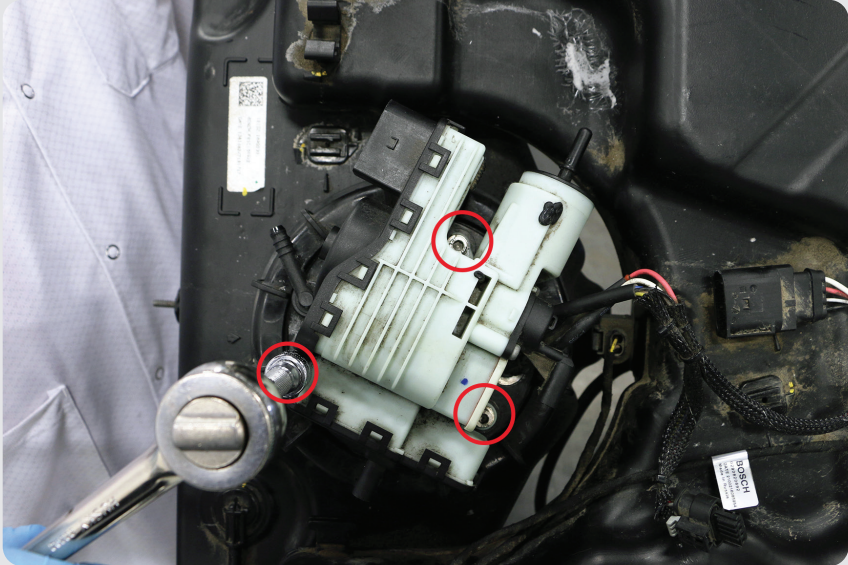


Fig. 1



Fig. 2

# DEF REPAIR KIT REPLACEMENT INSTRUCTIONS

1

## STEP ONE (CONTINUED)

Remove the three 4mm Hex screws from the urea pump (see Fig. 1 - 3).



Fig. 3

2

## STEP TWO

Lift up the urea pump and remove it from the tank.



Fig. 4

# DEF REPAIR KIT REPLACEMENT INSTRUCTIONS

3

## STEP THREE

Locate the two alignment arrows. There is one arrow on the tank and another on the reservoir (see Fig. 5). The two arrows must align during the re-installation process.

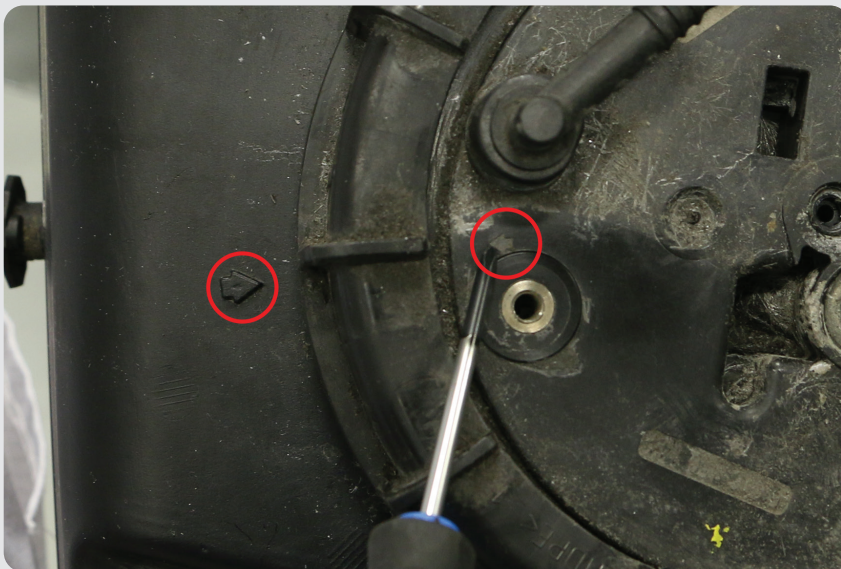


Fig. 5

4

## STEP FOUR

Using XeMODeX tool, remove the large retaining nut by turning it counter clockwise.



Fig. 6

# DEF REPAIR KIT REPLACEMENT INSTRUCTIONS

5

## STEP FIVE

Using the flat head screwdriver, gently lift the top of the reservoir.



Fig. 7

6

## STEP SIX

Lift and pull the large rubber seal upwards.



Fig. 8

# DEF REPAIR KIT REPLACEMENT INSTRUCTIONS

7

## STEP SEVEN

Now remove the rubber seal completely out of the way.



Fig. 9

8

## STEP EIGHT

Put your hands on the side walls of the reservoir and turn counter clockwise (see Fig. 10). Keep turning until the reservoir is released from the main tank. In some cases, it will take a considerable amount of force to rotate the reservoir. If you are unsuccessful, reposition your hands around the walls and try again.



Fig. 10

# DEF REPAIR KIT REPLACEMENT INSTRUCTIONS

9

### STEP NINE

Once the reservoir is released from the main tank, lift up and remove the reservoir completely.



Fig. 11

10

### STEP TEN

Using the other side of XeMODeX tool, crush down the star nut. Then put the tool under the star nut and pry it upwards, until the nut is removed.



Fig. 12

Fig. 13

# DEF REPAIR KIT REPLACEMENT INSTRUCTIONS

10

## STEP TEN (CONTINUED)

The red circles indicate the position of the two star nuts (see Fig. 14).

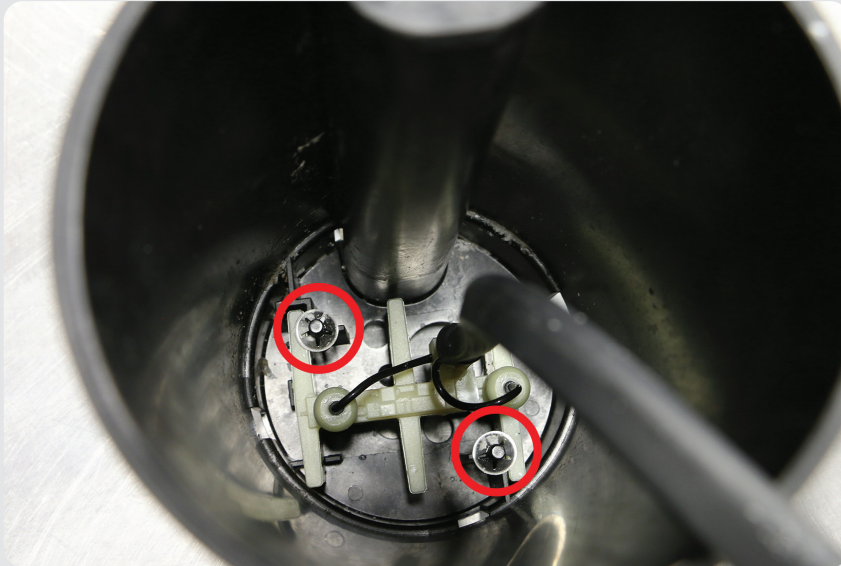


Fig. 14

11

## STEP ELEVEN

Remove the u-clip from the level sensor.



Fig. 15



# DEF REPAIR KIT REPLACEMENT INSTRUCTIONS

12

### STEP TWELVE

Remove the assembly from the cup.

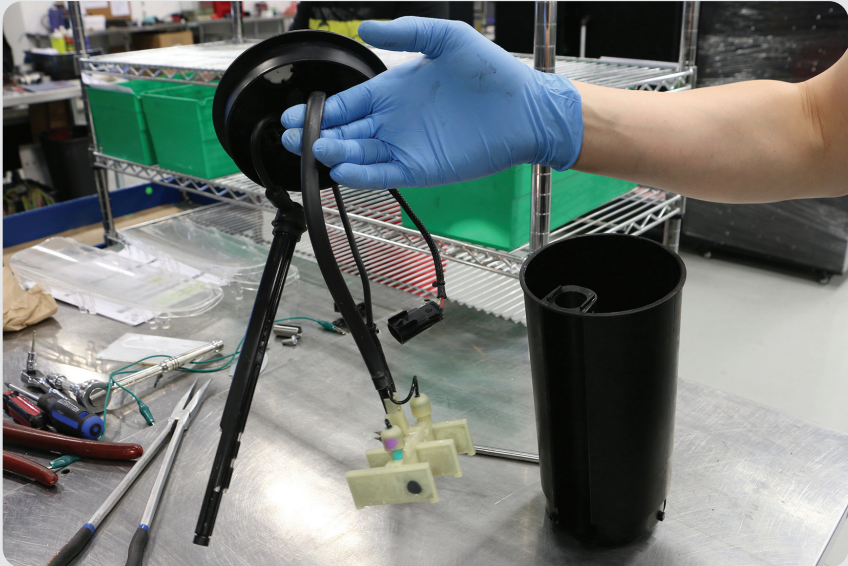


Fig. 16

13

### STEP THIRTEEN

Remove the filter from the bottom of the cup by turning it few degrees counter-clockwise.



Fig. 17

# DEF REPAIR KIT REPLACEMENT INSTRUCTIONS

14

## STEP FOURTEEN

Place the new heating element inside the cup as shown in Fig. 18



Fig. 18

15

## STEP FIFTEEN

Install new (supplied) star locking washers to secure the heater in place. Use XeMODeX tool to press the star washer down.

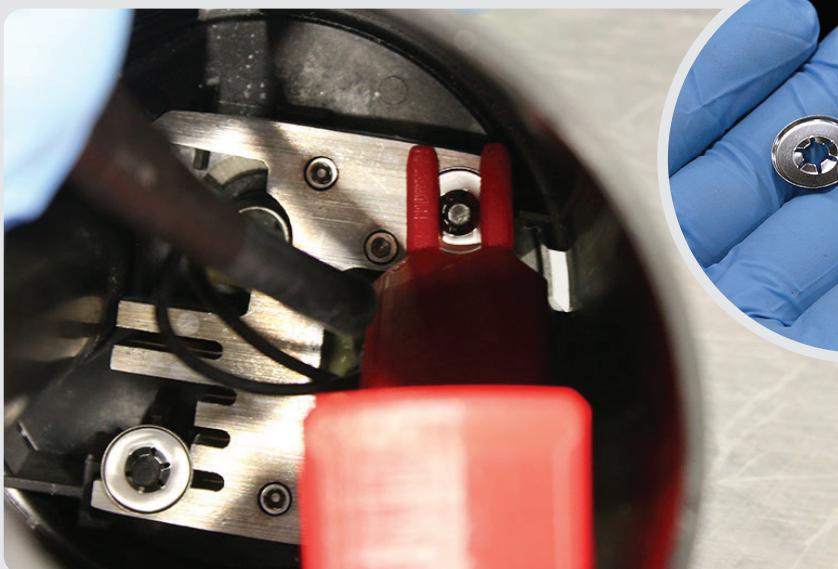


Fig. 19

Fig. 20

# DEF REPAIR KIT REPLACEMENT INSTRUCTIONS

16

## STEP SIXTEEN

Install the level sensor and secure it with the u-clip.

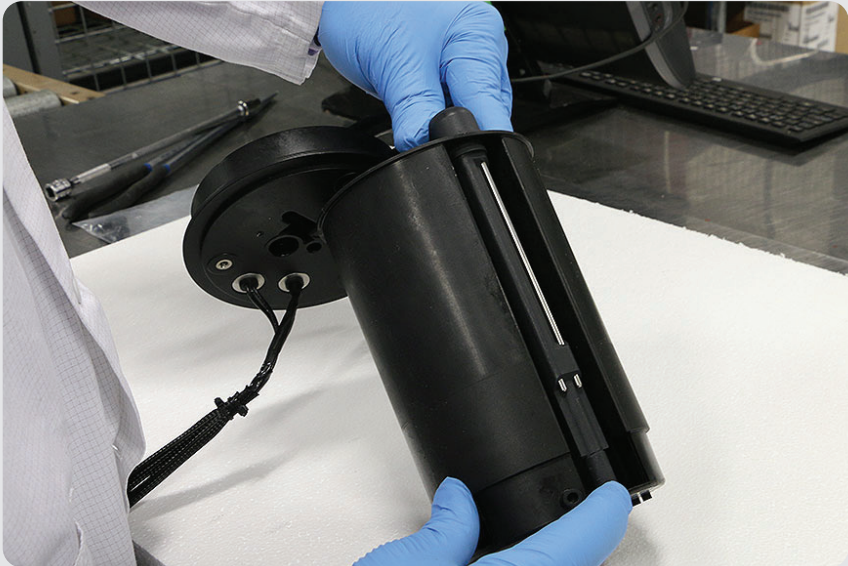


Fig. 21



Fig. 22

# DEF REPAIR KIT REPLACEMENT INSTRUCTIONS

17

## STEP SEVENTEEN

Install the filter and make sure it is properly aligned with the retaining clips.



Fig. 23

18

## STEP EIGHTEEN

Install supplied vent on top of the cap.



Fig. 24

Fig. 25

# DEF REPAIR KIT REPLACEMENT INSTRUCTIONS

---



## INSTALLATION COMPLETE

Kit installation is complete. Re-install the cup back in the main tank in reverse order starting from **Step 9**, or see quick guide below.

**Please ensure that both electrical connectors are clean and firmly locked in.**

Check out our video replacement instructions on our website [xemodex.com](http://xemodex.com)

## QUICK GUIDE: RE-INSTALL RESERVOIR CUP BACK INTO MAIN TANK

1

### STEP ONE

Reposition the reservoir cup back into the main tank.

2

### STEP TWO

Put your hands on the side walls of the reservoir and turn clockwise (see Fig. 8). Keep turning until the reservoir locks into the main tank.

3

### STEP THREE

Align the rubber seal to the inner walls of the main tank and push down.

4

### STEP FOUR

Re-install the large retaining nut by turning the top clockwise.

5

### STEP FIVE

Locate the two alignment arrows. There is one arrow on the tank and another on the reservoir (see Fig. 5). The two arrows must align during the re-installation process.

6

### STEP SIX

Install the urea pump back on to the top of the tank. Replace the three 4mm Allan screws (supplied) on to the urea pump (see Fig. 1).